



AirWave Management Platform™ helps IT organizations:

Reduce Wireless LAN support costs

Improve wireless network performance

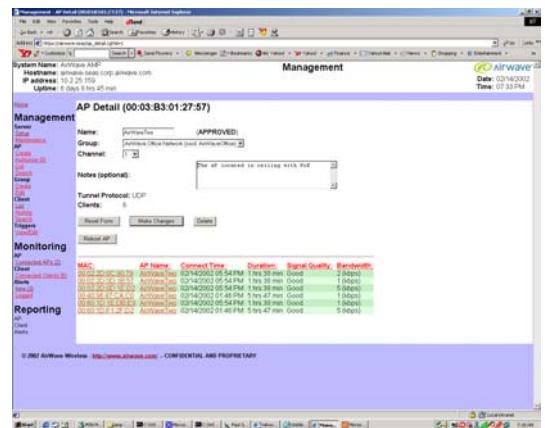
Strengthen end-to-end wireless security

WHY DO YOU NEED A SPECIALIZED WLAN MANAGEMENT SOLUTION?

Wireless LANs promise to revolutionize enterprise networking, increasing employee productivity by enabling truly mobile applications. Because of the clear business benefits, more than 70% of large enterprises are already beginning to deploy WLANs in their facilities. As they implement their first WLANs, thousands of IT organizations are now coming to the same realization: **Wireless networks cannot be managed effectively with traditional wireline management tools.** WLANs

rely on fundamentally different technology than wired networks, introduce new security challenges, grow and change more dynamically, and are used differently by employees. Wireless network management gets significantly more complex as WLANs are implemented enterprise-wide and grow more heterogeneous. Organizations without specialized WLAN management software face a crisis: WLAN support costs rise and network performance suffers as the IT staff attempts to manage the network through a combination of brute force and homegrown solutions.

Wireless network management gets significantly more complex as WLANs are implemented enterprise-wide and grow more heterogeneous. Organizations without specialized WLAN management software face a crisis: WLAN support costs rise and network performance suffers as the IT staff attempts to manage the network through a combination of brute force and homegrown solutions.



WHAT IS THE AIRWAVE MANAGEMENT PLATFORM™?

AMP™ is a specialized software solution that enables an IT organization to manage its Wireless LAN efficiently from a central console. It provides:

- **Comprehensive wireless network management**
AMP allows IT to monitor, configure, and secure all aspects of its WLAN from a single, integrated management console. AMP™ provides complete visibility into network performance by incorporating and analyzing data from all access points, connected client devices, and security repositories.
- **Compatibility with leading WLAN hardware**
AMP supports and manages access points from leading OEMs, across all current and emerging standards. AMP helps IT "future-proof" a WLAN, ensuring that IT can manage a complex, diverse network from a common console.
- **Integration with existing network infrastructure**
AMP™ interoperates with an enterprise's existing security solution, network management solution, and network hardware. As a result, AMP is easy to implement and does not require that an IT organization reconfigure or add new hardware to support its WLAN.

WHAT DOES THE AIRWAVE MANAGEMENT PLATFORM DO?

Network Monitoring	
Rich User Interface	Provides complete visibility to all network devices and connected client devices, allowing IT to drill down to individual client issues.
Device Polling	Enables the IT organization to set polling intervals to gather near real-time information on device performance.
AirMapping™ Module	Uses authenticated APs to create a “map” of the enterprise airspace, detecting potential channel interference and environmental factors that affect network performance.
Configurable Triggers	Immediately detects and logs performance parameters that differ from acceptable standards, allowing IT to address problems proactively, before users are affected.
Flexible Alerting Module	Allows IT to determine where alerts are sent (log, console, email, etc.) and define an automatic escalation path depending on the severity of the problem.
Comprehensive Reporting Package	Provides a set of daily, weekly, and monthly reports to monitor network performance over time, allowing the IT staff to fine-tune network configuration to achieve optimal performance.
Role-based Console Views	Allows IT to configure views and permissions by role (Network Administrator vs. Help Desk, etc.)
Network Configuration	
Multivendor Support	Enables IT to remotely control APs (security settings, channel settings, transmission power, SSID, etc.) from multiple OEMs using a common interface.
Configuration Management	Eliminates human error by automatically configuring new APs upon discovery, and monitors configurations on an ongoing basis to ensure compliance with company policy.
Firmware Update Management	Ensures that enterprise APs are running the most current version of OEM firmware and manages the update process.
Device Grouping	Helps IT group APs that share common configurations for efficient management.
Flexible Scheduling Module	Schedules configuration changes to occur at specified times to minimize network downtime.
Network Security	
VPN & RADIUS Integration	Interoperates with leading VPN and RADIUS-based solutions to integrate user authentication data, providing a comprehensive view of network security and identifying potential rogue users.
Application of Security Settings	Applies appropriate security settings to all network devices, ensuring that they always remain in compliance with network security policies.
Rogue Access Point Detection	Uses authenticated access points to detect potential “rogues” in the enterprise environment.
Optional Tunneling Software	Establishes a “dynamic VLAN” between enabled access points and a VPN server, shielding the wired network without requiring additional hardware.

WHERE DO I GET THE AIRWAVE MANAGEMENT PLATFORM?

AirWave markets and distributes its products through qualified Value Added Resellers and Systems Integrators. To find a VAR near you or to learn more about the AirWave Management Platform, please contact:

sales@airwave.com
(650) 286-6105 direct