

Check Point® Connectra / Ericom® PowerTerm WebConnect

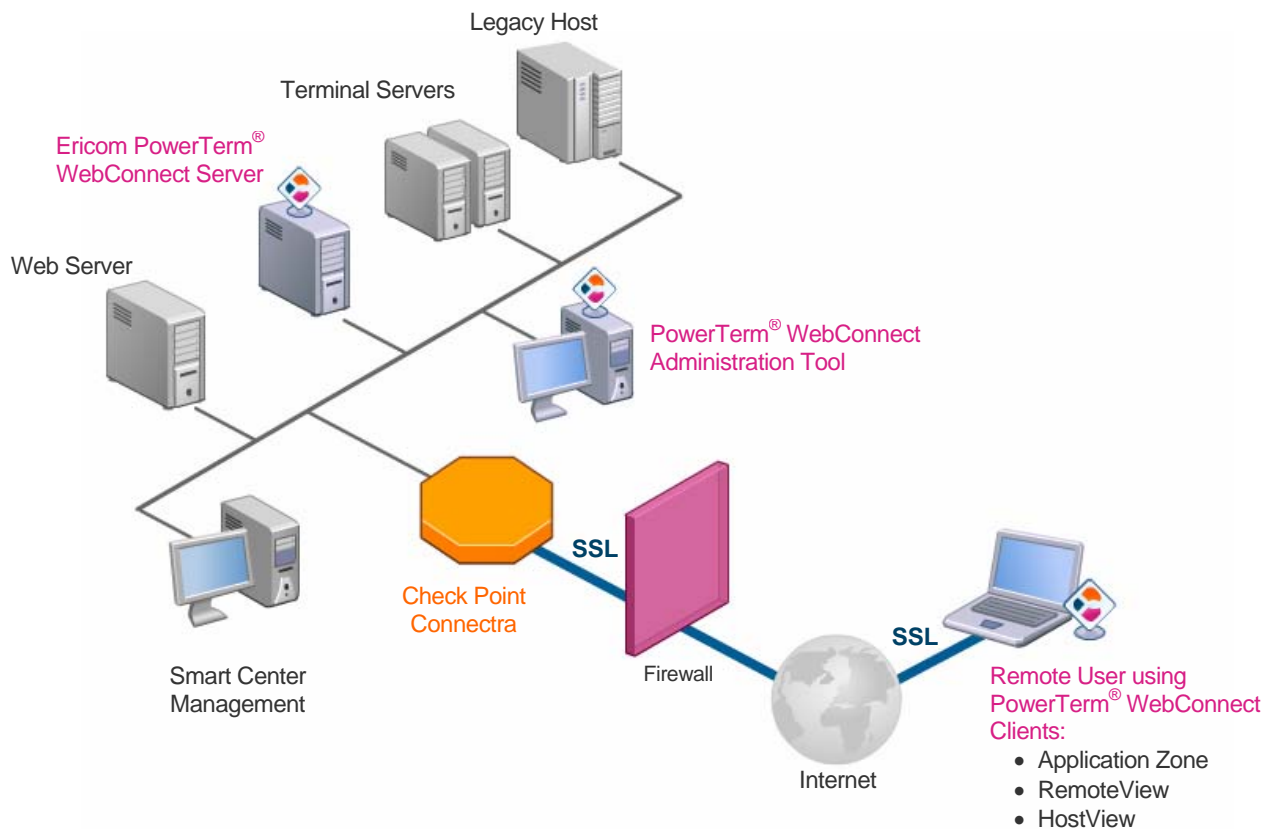
Interoperability Guide

Table of Contents

Introduction	4
PowerTerm WebConnect Overview	5
PowerTerm WebConnect Communication Modes	5
PowerTerm WebConnect Client Installation	5
Launching PowerTerm WebConnect Clients	6
Connectra Configuration	6
Connectra Network Mode	6
Connectra Configuration Settings	7
PowerTerm WebConnect Clients Download and Installation	8
Launching PowerTerm WebConnect Clients	8
Connectra Application Mode	9
Connectra Configuration Settings	9
PowerTerm WebConnect Client Installation	10
Launching a PowerTerm WebConnect Client	10

Introduction

This document provides the information required to achieve interoperability between Ericom PowerTerm WebConnect and Check Point Connectra. The purpose of this interoperability is enable secure remote access by PowerTerm WebConnect clients to PowerTerm WebConnect servers and other organizational resources such as Terminal Servers and Legacy Hosts. The following diagram outlines the design of such a configuration:



PowerTerm WebConnect Overview

This section provides general background regarding the functionality and operation of Ericom PowerTerm WebConnect. For more information please review the PowerTerm WebConnect Administration Manual.

PowerTerm WebConnect provides multiple clients that are managed by a central server. These clients provide connectivity services to a variety of systems such as Microsoft Terminal Servers and legacy hosts. The PowerTerm WebConnect clients maintain a constant connection to the PowerTerm WebConnect server for downloading configuration settings, client updates and also for real-time monitoring and control by a system administrator.

PowerTerm WebConnect Communication Modes

PowerTerm WebConnect provides two modes of communication: Direct mode and Gateway mode. The administrator can specify which mode to use per each host connection. In both modes the PowerTerm WebConnect clients maintain a constant connection to the PowerTerm WebConnect server (TCP using port 4000 by default). In Direct mode the clients also create an additional connection to the target host. For example, in Direct mode PowerTerm WebConnect RemoteView will establish one connection to the PowerTerm WebConnect server and a second to a Terminal Server (using port 3389).

In Gateway mode the PowerTerm WebConnect clients connect only to the PowerTerm WebConnect server. The server then establishes a connection to the target host. Thus all communication between the client and the host is routed through the PowerTerm WebConnect server. This means that the client need not have direct access to the host in order to connect to it using Gateway mode.

PowerTerm WebConnect Client Installation

PowerTerm WebConnect can automatically provision its clients to the end-users via the web. An ActiveX Control, a Java Applet or a Mozilla XPI package will be downloaded by the browser. That component will then connect to the PowerTerm WebConnect server and download clients as required. In addition the PowerTerm WebConnect clients will be automatically updated when new versions are placed on the server. PowerTerm WebConnect also supports client installation and upgrades using MSI.

Launching PowerTerm WebConnect Clients

PowerTerm WebConnect clients can be launched from the browser or using shortcuts on the Desktop and Start Menu. Browser links and local shortcuts can launch a client for a particular host connection. In this mode of operation, the client will automatically connect to the target host with the appropriate settings. Alternatively an application launcher, called PowerTerm WebConnect Application Zone, can be used. The Application Zone displays all the connections available to the user for direct activation. The Application Zone itself is a PowerTerm WebConnect client.

PowerTerm WebConnect clients receive connection parameters, such as the server address, through the command-line. As a result, in order to enable PowerTerm WebConnect clients to be launched directly from Connectra the administrator needs to define the application with the appropriate command-line. The description of the command-line format used by the clients can be found in the PowerTerm WebConnect Administrator's Manual. For example, the following command-line launches the Application Zone and connects to a PowerTerm WebConnect server installed at IP address 126.0.1.10:

```
"C:\PowerTerm WebConnect 5.5\PtAgent.exe" 126.0.1.10
```

The path to the Application Zone and the IP address of the PowerTerm WebConnect server will vary per installation.

In Gateway mode the PowerTerm WebConnect clients connect only to the PowerTerm WebConnect server. The server then establishes a connection to the target host. Thus all communication between the client and the host is routed through the PowerTerm WebConnect server. This means that the client need not have direct access to the host in order to connect to it using Gateway mode.

Connectra Configuration

Connectra provides two main modes of operation: Network mode and Application mode. This section describes how to configure Connectra to enable the use of PowerTerm WebConnect in both modes.

Connectra Network Mode

Connectra Network mode allows end-users to utilize PowerTerm WebConnect in exactly the same way that they would without Connectra. Thus the organization realizes all the security benefits of Connectra while retaining the full functionality of PowerTerm WebConnect.

Connectra Configuration Settings

The Connectra configuration depends on the PowerTerm WebConnect communication mode used, as described above. In PowerTerm WebConnect Gateway mode the following Connectra settings need to be applied:

1. Create a PowerTerm WebConnect service, for the PowerTerm WebConnect port (port 4000 by default).
2. Create a PowerTerm WebConnect network application:
 - a. Add a new server with the IP address of the PowerTerm WebConnect server.
 - b. Add the PowerTerm WebConnect service to this network application.
3. Add the PowerTerm WebConnect network application to the desired user group.

In PowerTerm WebConnect Direct mode the following Connectra settings need to be applied:

1. Create a PowerTerm WebConnect service, for the PowerTerm WebConnect port (port 4000 by default).
2. Create an RDP service for port 3389
3. Create a Legacy Host service for port 23 (telnet) or port 22 (SSH) or port 992 (SSL) as appropriate.
4. Create a PowerTerm WebConnect network application:
 - a. Add a new server with the IP address of the PowerTerm WebConnect server.
 - b. Add the PowerTerm WebConnect service to this network application.
5. Create an RDP network application:
 - a. Add all the relevant Terminal Servers
 - b. Add the RDP service to this network application
6. Create a Legacy Host network application:
 - a. Add all the relevant hosts

- b. Add the Legacy Host service to this network application
7. Add the PowerTerm WebConnect network application, the RDP application and the Legacy Host application to the desired user group.

In both modes, if the client needs to be downloaded and launched from a Web Site, that Web Site must also be provided as a Network Application:

1. Create a network application:
 - a. Add a new server with the IP address of the Web Server.
 - b. Add the HTTP service.
2. Add the network application to the desired user group.

PowerTerm WebConnect Clients Download and Installation

To allow download and installation of PowerTerm WebConnect clients using the browser, a network application needs to be created on Connectra to the Web Server from which the initial components (ActiveX, Java Applet or XPI) are to be downloaded. Alternatively, the PowerTerm WebConnect clients can be installed directly on the user's device using MSI.Server-based Computing (SBC) Solutions

Launching PowerTerm WebConnect Clients

The user can launch PowerTerm WebConnect clients from a browser using the same pages used to download and install the clients (see section above). Alternatively, the clients can be launched from Desktop and Start Menu shortcuts that were defined by the PowerTerm WebConnect administrator. In addition an application link can be created in the Connectra Web Interface to launch the PowerTerm WebConnect clients. In this case the command-line should be copied from a PowerTerm WebConnect shortcut or the Parameters property in the Web page used to install the client. The end-user can also use the Quick Launch option to start the clients.

Connectra Application Mode

When using Connectra Application Mode the user must launch the PowerTerm WebConnect clients from within Connectra. The user can either launch clients directly as a Network Applications or launch the PowerTerm WebConnect Web Interface as a Network Application, and through it launch the PowerTerm WebConnect clients. The user cannot, however, launch PowerTerm WebConnect clients from Desktop and Start Menu shortcuts as the clients will fail to connect in that case. Consequently the PowerTerm WebConnect administrator should disable shortcuts when using Connectra Application Mode.

Connectra Configuration Settings

The Connectra configuration depends on the PowerTerm WebConnect communication mode used, as described above. In PowerTerm WebConnect Gateway mode the following Connectra settings need to be applied:

1. Create a PowerTerm WebConnect service, for the PowerTerm WebConnect port (port 4000 by default).
2. Create a PowerTerm WebConnect network application:
 - a. Add a new server with the IP address of the PowerTerm WebConnect server.
 - b. Add the PowerTerm WebConnect service to this network application.
3. If the PowerTerm WebConnect client are to be launched directly from Connectra, create an application link to launch the clients
4. Add the PowerTerm WebConnect network application to the desired user group.

In PowerTerm WebConnect Direct mode the following Connectra settings need to be applied:

1. Create a PowerTerm WebConnect service, for the PowerTerm WebConnect port (port 4000 by default).
2. Create an RDP service for port 3389
3. Create a Legacy Host service for port 23 (telnet) or port 22 (SSH) or port 992 (SSL) as appropriate.
4. Create a PowerTerm WebConnect network application:

- a. Add a new server with the IP address of the PowerTerm WebConnect server.
 - b. Add the PowerTerm WebConnect service to this network application.
 - c. Add the RDP service to the network application.
 - d. Add the Legacy Host service to the network application.
 - e. If the PowerTerm WebConnect clients are to be launched directly from Connectra and not via a Web page, create an application link to launch the clients
5. Add the PowerTerm WebConnect network application to the desired user group.

In both modes, if the client needs to be downloaded and launched from a Web Site, that Web Site must also be provided as a Network Application:

1. Create a network application:
 - a. Add a new server with the IP address of the Web Server.
 - b. Add the HTTP service.
 - c. Create an application link with the appropriate URL.
2. Add the network application to the desired user group.

PowerTerm WebConnect Client Installation

To allow download and installation of PowerTerm WebConnect clients using the browser, the Web Site must be provided as a network application as described above. Alternatively, the PowerTerm WebConnect clients can be installed on the user's device using MSI, and launched directly from Connectra, as described above.

Launching a PowerTerm WebConnect Client

The user can launch PowerTerm WebConnect clients from a browser using the same pages used to download and install the clients, or directly from Connectra. The user will not be able to launch the PowerTerm WebConnect clients from Desktop and Start Menu shortcuts.